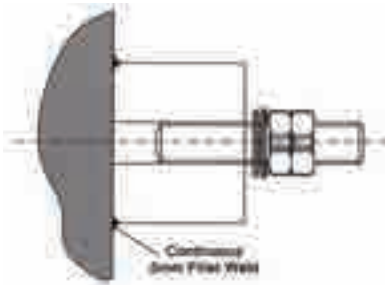


Earth Boss



Manufactured from high quality SS316 material, it comes with SS316 stud, bolts and washers. It is commonly welded to steel vessels, tanks and structures for earthing application. Suitable for use in highly corrosive environment.

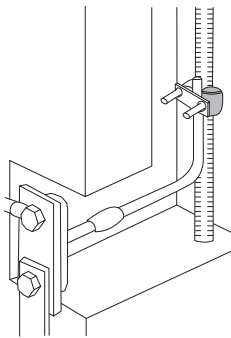
Earth Boss - Stainless Steel 316



Part No.	Length (mm)	Diameter (mm)	Thread Diameter
SSEB2525-L	25	25	M10
SSEB3040-L	30	40	M10
SSEB2550-L	25	50	M10
SSEB5050-L	50	50	M10

Other sizes are available upon request. Material for bolts, nuts and washers can be changed upon request.

Earth Point



Manufactured from high quality copper material. Pre-welded cable tail using standard 70mm² PVC cable and exothermic welding process to form a permanent & highly conductive joint.



Part No.	Description	Hole size (mm)
1HEP-C	One Hole Earth Point	M10 x 15
2HEP-C	Two Hole Earth Point	M8 x 12
4HEP-C	Four Hole Earth Point	M8 x 14
1HEP500-C	One Hole Earth Point with 500mm of Pre-welded 70mm ² PVC Cable	M10 x 15
2HEP500-C	Two Hole Earth Point with 500mm of Pre-welded 70mm ² PVC Cable	M8x 12
4HEP500-C	Four Hole Earth Point with 500mm of Pre-welded 70mm ² PVC Cable	M8 x 14

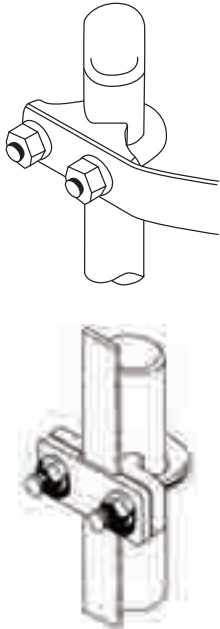
Different lengths of pre-welded cable are available upon request.

Our heavy duty and versatile rod to cable clamps are made from high quality copper for lasting quality and corrosion resistance. It allows connection between earth rod to cables /rebar to cables. We offer a comprehensive solution for connection to a single cable, two cables, three cables or cables with copper tapes. Custom made solutions available upon request.

Earth Clamp - U Bolt Type



IEC 62561-1 Class H



U-Bolt Rod to Tape Clamp (Type E)

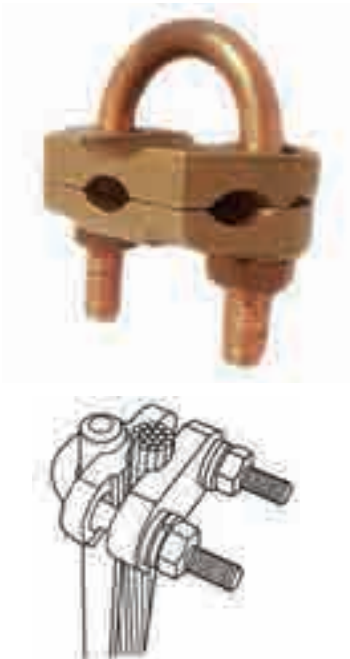
Part No.	Max Rod Diameter (mm)	Max Tape Dimension (mm)
CRTE20-C	20	26 x 12
CRTE20-CT	20	26 x 12

CRTE20-CT allows tape to be clamped without drilling.

Earth Clamp - U Bolt Type



IEC 62561-1 Class H



U-Bolt Rod to Cable Clamp (Type GUV)

Part No.	Max Rod Diameter (mm)	Cable Conductor Range (mm ²)
CUB1695-C	15	16 - 95
CUB20185-C	20	70 - 185
CUB20300-C	20	150 - 300
CUB25185-C	25	70 - 185
CUB32120-C	32	70 - 120